



Jersey Jack Pinball

1850 Greenleaf Ave.
Elk Grove Village, IL 60007
630.830.5225

SERVICE BULLETIN

BY: BARRY ENGLER

DATE: 12/08/2020

GAME: GNR LE

SUBJECT: 51-100063-00

Left Ramp Diverter, missing Lock Washer and Flat Washer.

Description

A limited number of GNR LE Machines left our factory with missing washers on the Left Ramp Diverter Assembly. The missing washers may cause the Left Ramp Diverter Jam Plate to become loose, causing the potential possibility of the Jam Plate to fall off. The Jam Plate is used to center the Diverter (#4) within the plastic ramp cutout.

Tools & Materials Required

7/64" Allen Wrench / Hex Key

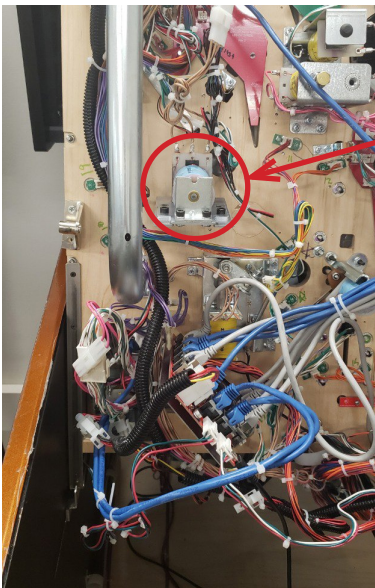
Parts Kit (containing 2 - 6-32 x 3/8" Cap Screws, 2 - #6 flat washers and 2 - #6 lock washers)

GNR Manual http://marketing.jerseyjackpinball.com/gnr/GNR_Manual_Nov2020.pdf

INSTRUCTIONS

With the power off and the game unplugged.

1. Remove the playfield glass and raise the playfield so it is resting against the backbox. Consult the GNR Manual, removing the playfield glass pg.6, raising the playfield pg. 7-8 you want the playfield to end up in position 4 illustrated on pg.8.
2. If your Diverter Assembly is still intact. Remove the 2, 6-32 cap screws (#16) using the 7/64" Allen Wrench. If your Jam Plate has fallen off, look on the bottom of the cabinet for the Jam Plate (#12), Cap Screw (#16), Lock Washer (#14) and Washer (#13)
See fig. 1.
3. Re-assemble the Ramp diverter by following **Fig. 1**. Place (#16) Cap Screw through Lock Washer (#14) followed by Washer (#13), put the Cap Screw with Washers in either hole on Jam Plate (#12) and using the Allen Wrench screw the Jam Plate into Guide Bracket (#17), repeat steps for the other hole.
4. Test the Diverter by pulling plunger (#15) down until it makes contact with the coil stop. IF the diverter Guide (#4) touched or rubbed against the Ramp, you will need to loosen slightly the 2 Cap Screws and adjust the Jam Plate so that the Diverter Guide does not touch or rub the Ramp during the full movement of the plunger stroke, re-tighten once you are satisfied with the position of the Diverter Guide.
5. Test your work by playing no fewer than 10 games.

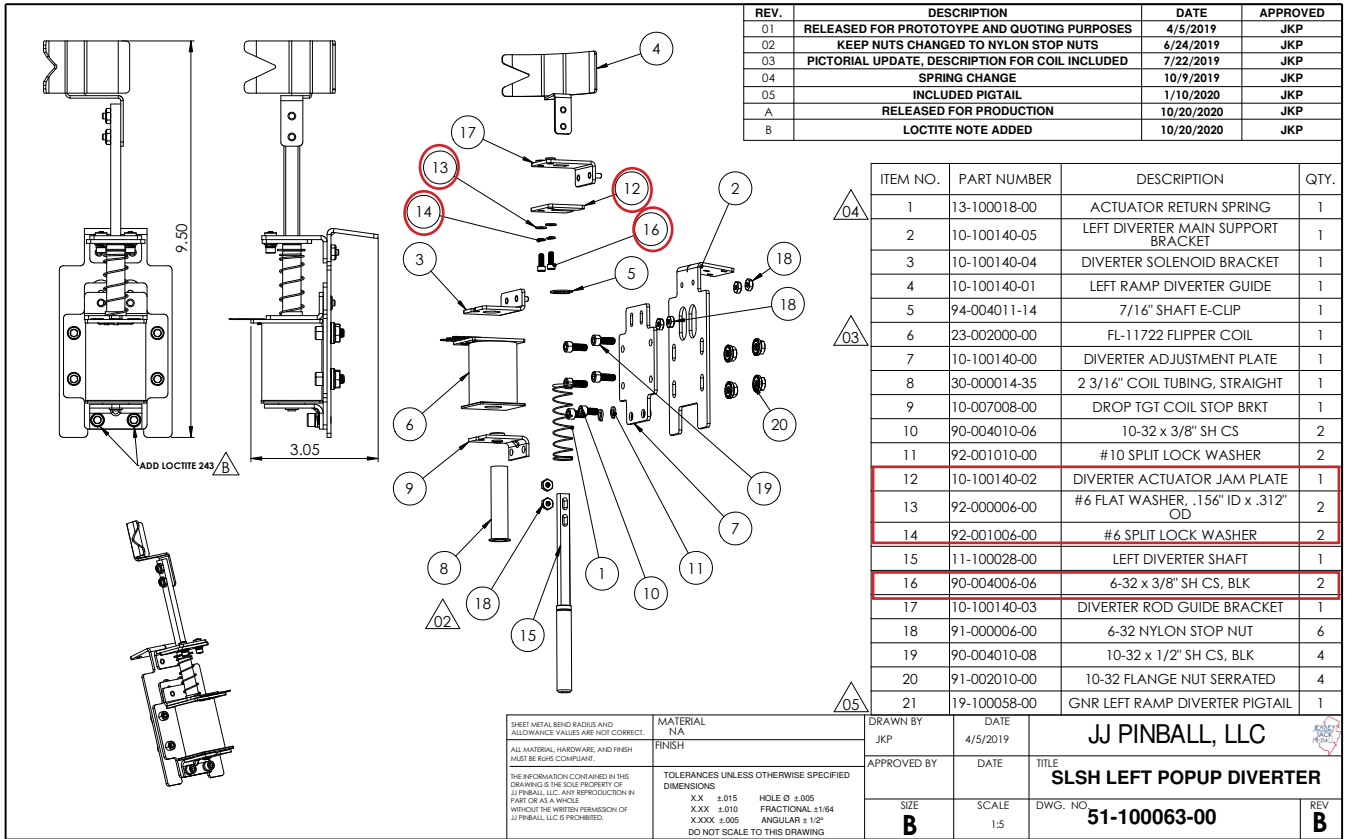


Location of the Diverter



Check these Screws

Fig. 1



PARTS YOU MIGHT FIND IN THE BOTTOM OF YOUR GAME

